

Choir
Piano

Once in Royal David's City

Words: C F Alexander, Music: H J Gauntlett

Music arranged: Laurence K J Nicholas

Descant: David Wilcocks, adapted by Laurence K J Nicholas

♩=78



1) Once in roy - al Da - vid's ci - ty Stood a low - ly cat - tle_ shed,
Where a mo - ther laid her_ Ba - by In a man - ger for_ His bed:

♩=78

G/BD⁷/A G A⁷/E A⁷ D⁷ G G D G C D G

Give notes to Choir

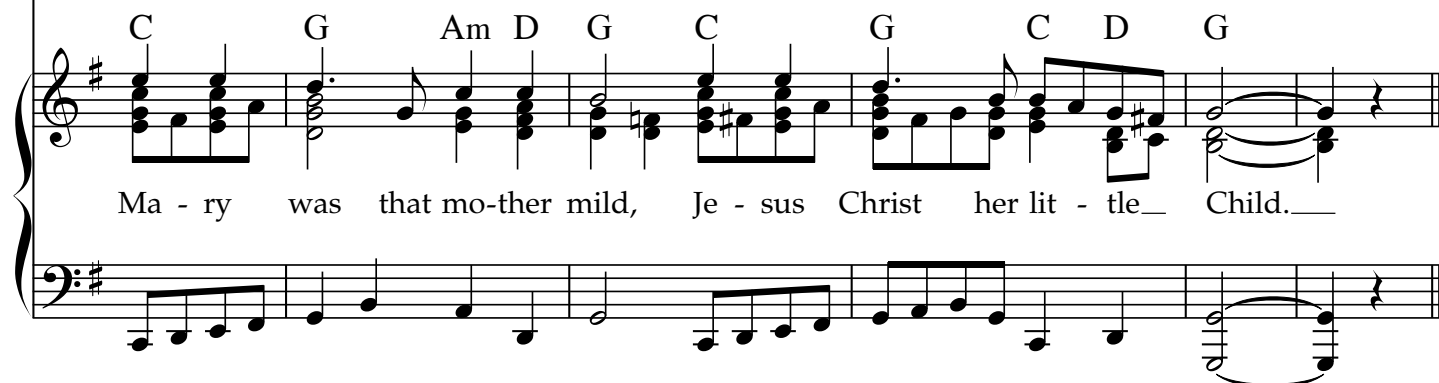


1) Once in roy - al Da - vid's ci - ty Stood a low - ly cat - tle_ shed,
Where a mo - ther laid her_ Ba - by In a man - ger for_ His bed:

7



Ma - ry was that mo - ther mild, Je - sus Christ her lit - tle_ Child.____



Ma - ry was that mo - ther mild, Je - sus Christ her lit - tle_ Child.____

V.S.

13

2) He came down to earth from hea - ven, Who is God and Lord of__ all,
And His shel - ter was a__ sta - ble, And His cra - dle was a__ stall;

G/B D7/A G A7/E A7 D7 G G D G C D G

18

With the poor, and mean, and lowly, Lived on earth our Sa - viour ho-ly.____

C G Am D G C G C D G

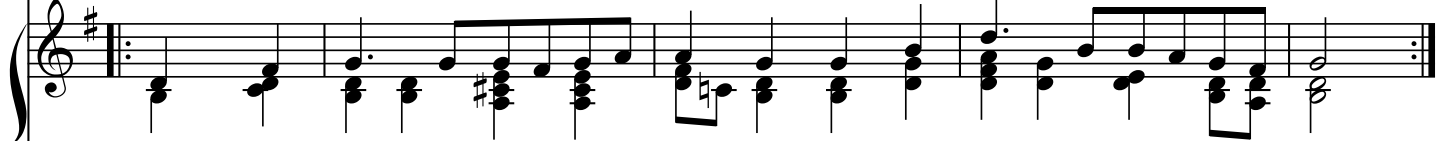
24



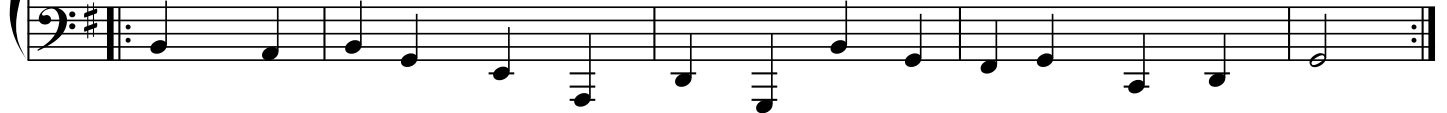
3) And through all His won-drous chil-dhood He would ho - nour and o - bey,
Love and watch the low - ly__ mai - den, In whose gen - tle arms He_ lay:



G/B D⁷/A G A⁷/E A⁷ D⁷ G G D G C D G



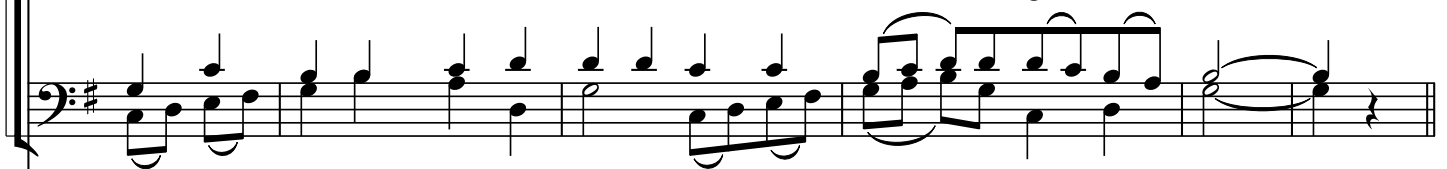
3) And through all His won-drous chil-dhood He would ho - nour and o - bey,
Love and watch the low - ly__ mai - den, In whose gen - tle arms He_ lay:



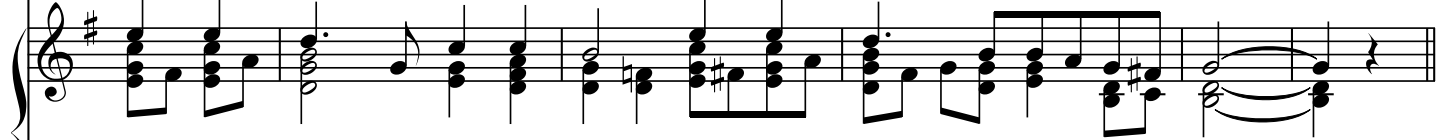
29



Chris-tian chil - dren all must be Mild, o - bed - ient, good as__ He.____



C G Am D G C G C D G



Chris-tian chil - dren all must be Mild, o - bed - ient, good as__ He.____



35

4) For he is our chil - dhood's pat - tern; Day by day, like us_ He_ grew;
He was lit - tle, weak and_ help - less, Tears and smiles like us_ He_ knew;

G/BD⁷/A G A⁷/E A⁷ D⁷ G G D G C D G

40

And He feel - eth for our sad-ness, And He shar - eth in_ our_ glad-ness._

C G Am D G C G C D G

46

5) And our eyes at last shall see Him, Through His own re - deem - ing love;
For that Child so dear and gen - tle Is our Lord in heav'n a - bove,

G/B D⁷/A G A⁷/E A⁷ D⁷ G G D G C D G

51

And He leads His chil-dren on To the place where He is gone.—

C G Am D G C G C D G

57

6) Not in that poor low - ly sta - ble, With the ox - en stan - ding by,
We shall see Him; but in hea - ven Set at God's right hand on high;

G/BD/A G C D G G G C D⁷ G

62

When like stars His chil - dren crowned All in

C D/C G/B C/B D⁷/A Bm/A Bm/G C/G Am/F[#]

65

white shall wait a - round.

Bm Em Am⁷ (Am/D) D⁷ G