



NCD Status Guide

AL1101 Studley Nativity of BVM

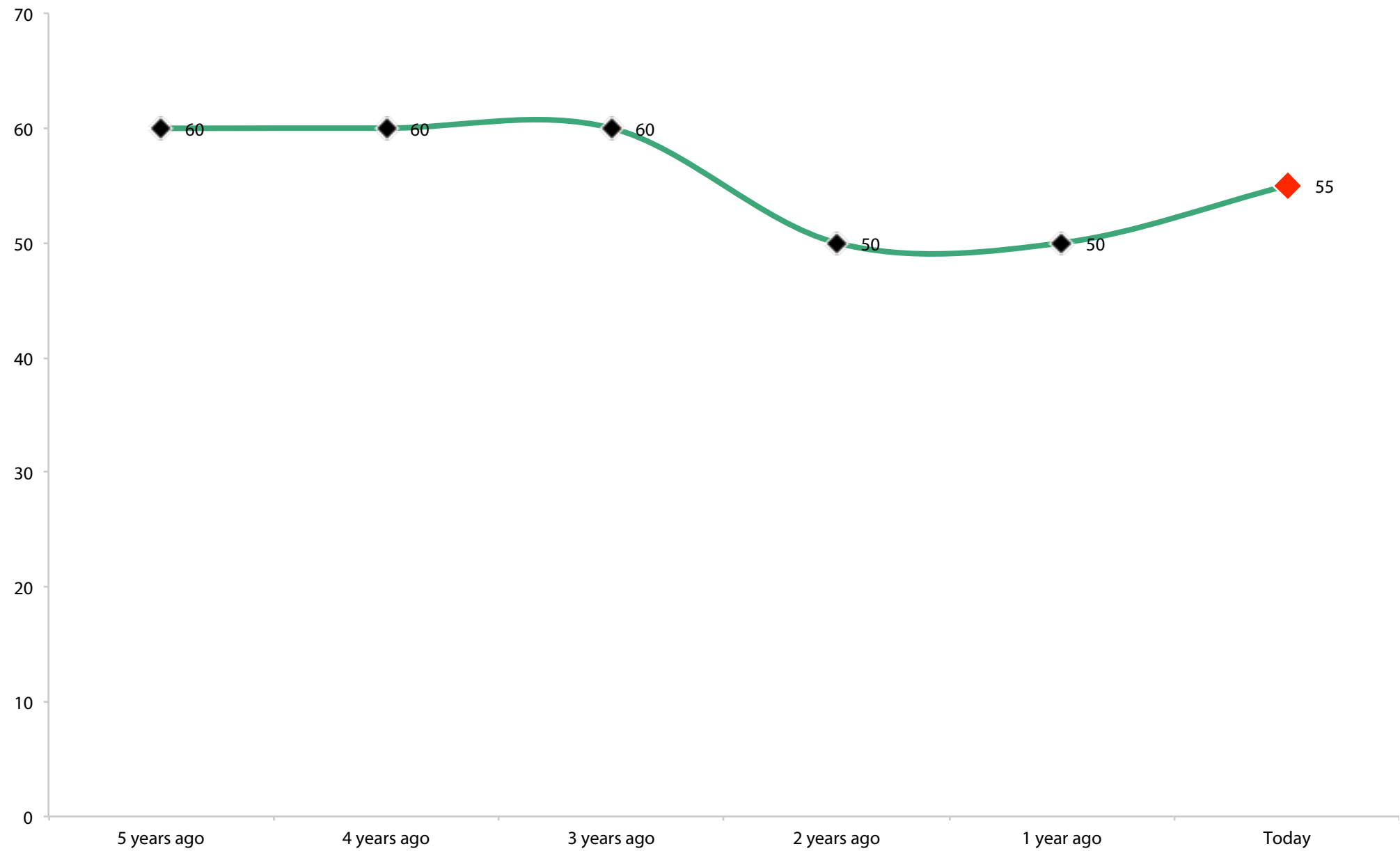
April 2023

Pastor for 4 years: Kate Mier

Profile	Date	Minimum Factor	Maximum Factor	Min-Max Difference	Average
5	Apr 2023	31.2 Inspiring Worship Service	44.8 Need-oriented Evangelism	13.6	40.8
				Change 4 - 5	-10.0
4	Aug 2019	44.2 Inspiring Worship Service	58.2 Empowering Leadership	14.0	50.8
				Change 3 - 4	-3.3
3	Feb 2017	43.0 Passionate Spirituality	64.5 Gift-based Ministry	21.5	54.1
				Change 2 - 3	-5.5
2	Nov 2015	52.7 Inspiring Worship Service	69.2 Gift-based Ministry	16.5	59.6

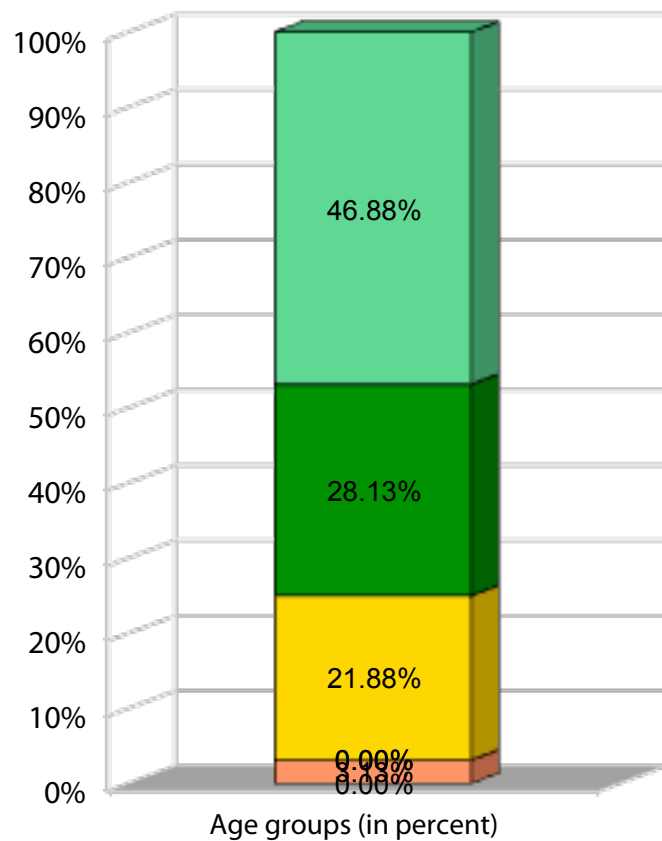


Adult attendance growth

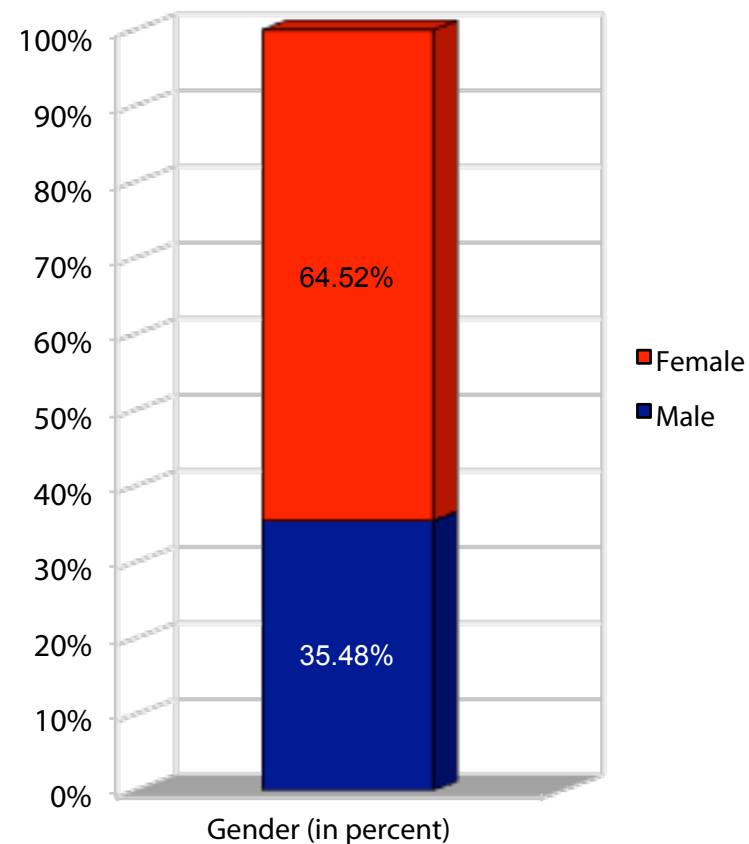




Survey participants by age groups and gender



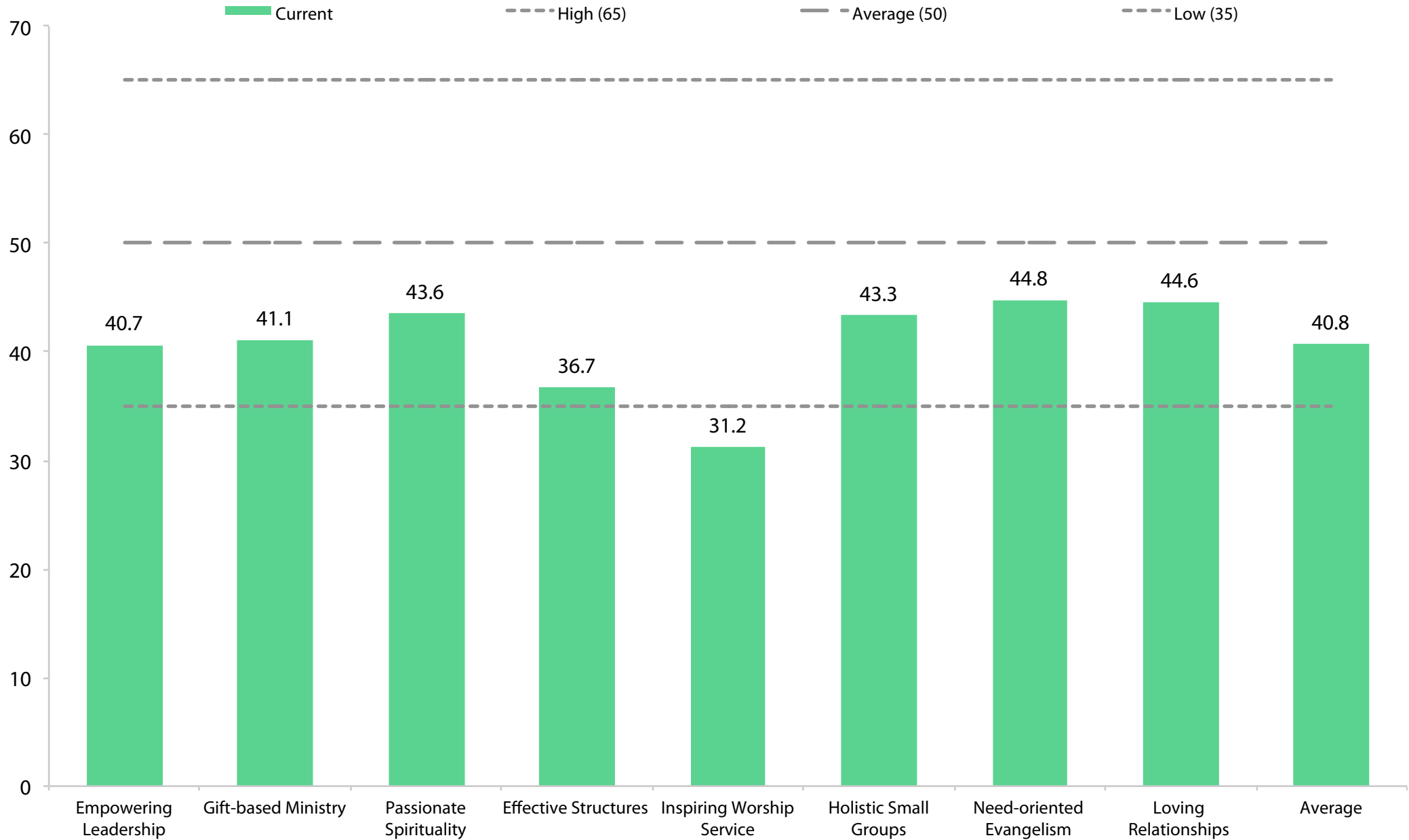
- 70+
- 61-70
- 51-60
- 41-50
- 31-40
- 21-30
- 20



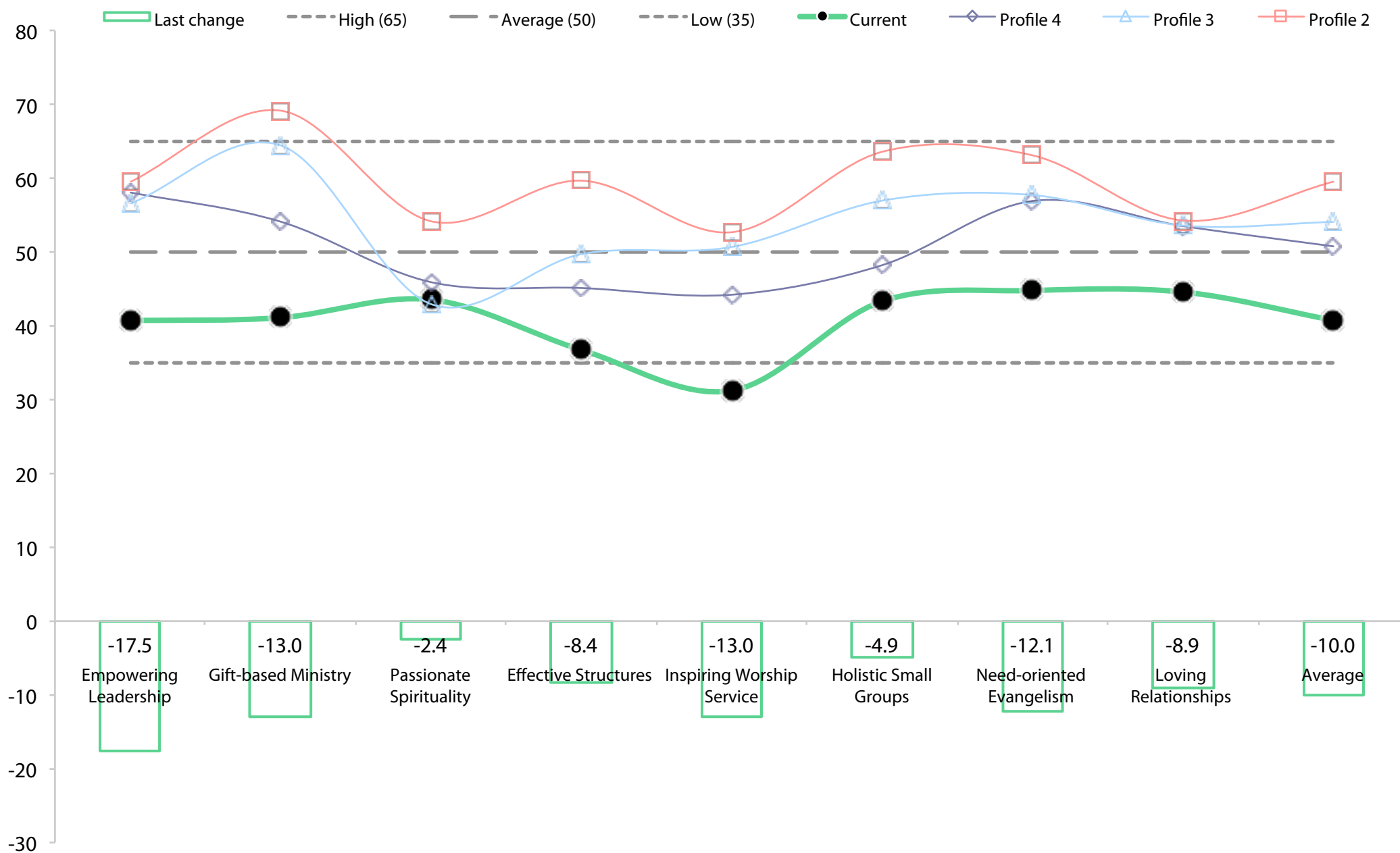
- Female
- Male



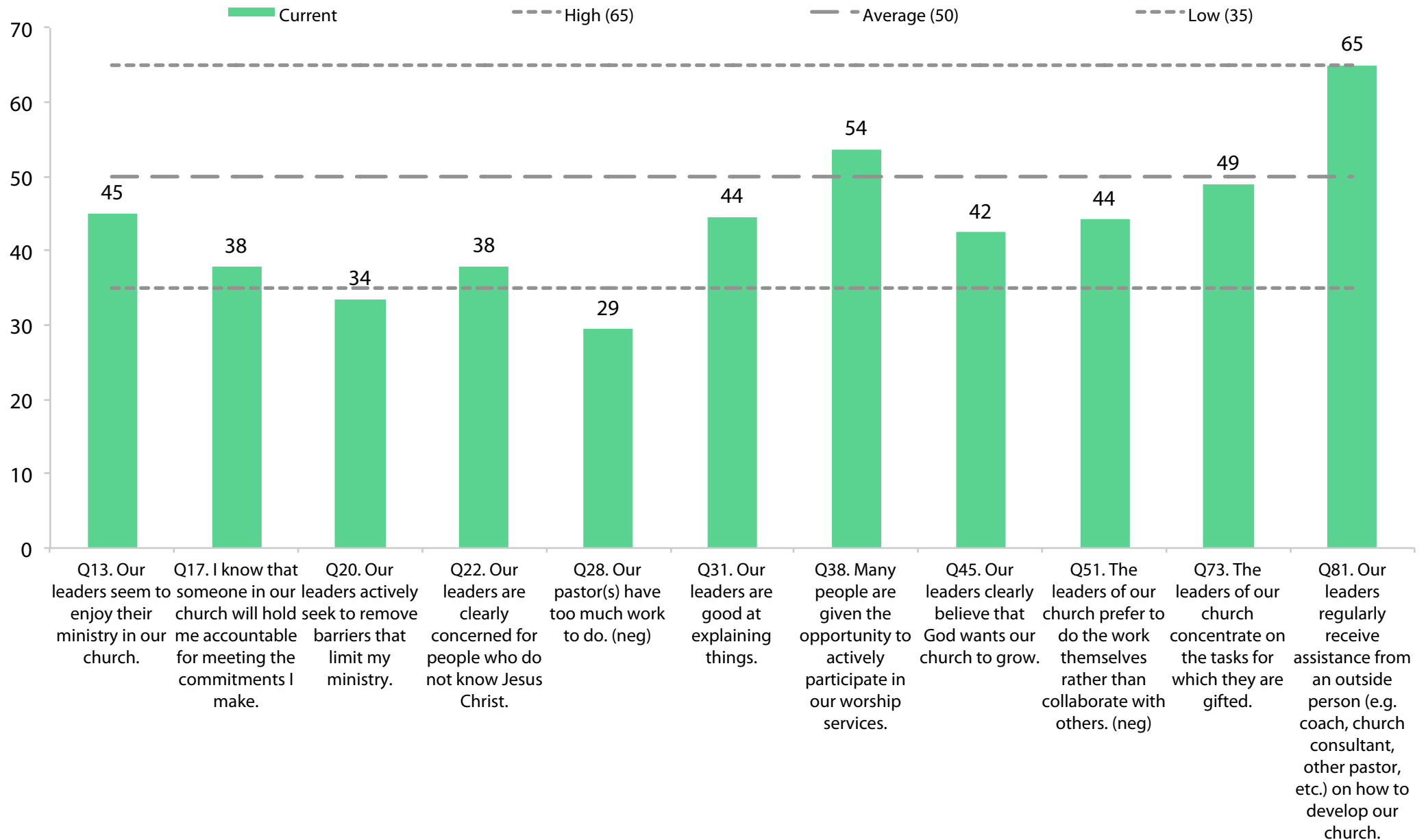
Quality characteristic current profile



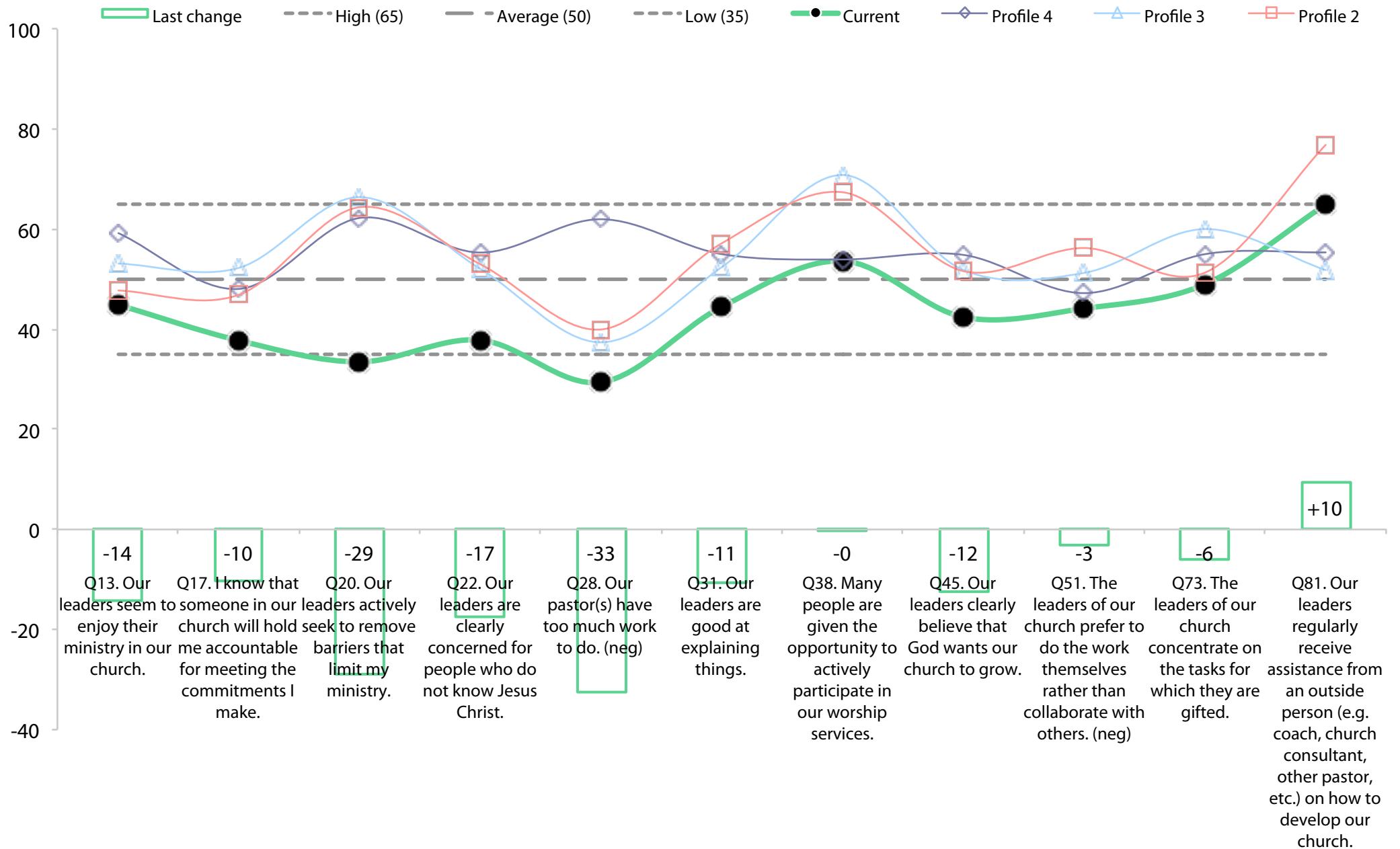
Dynamic progress



Empowering Leadership Current Profile

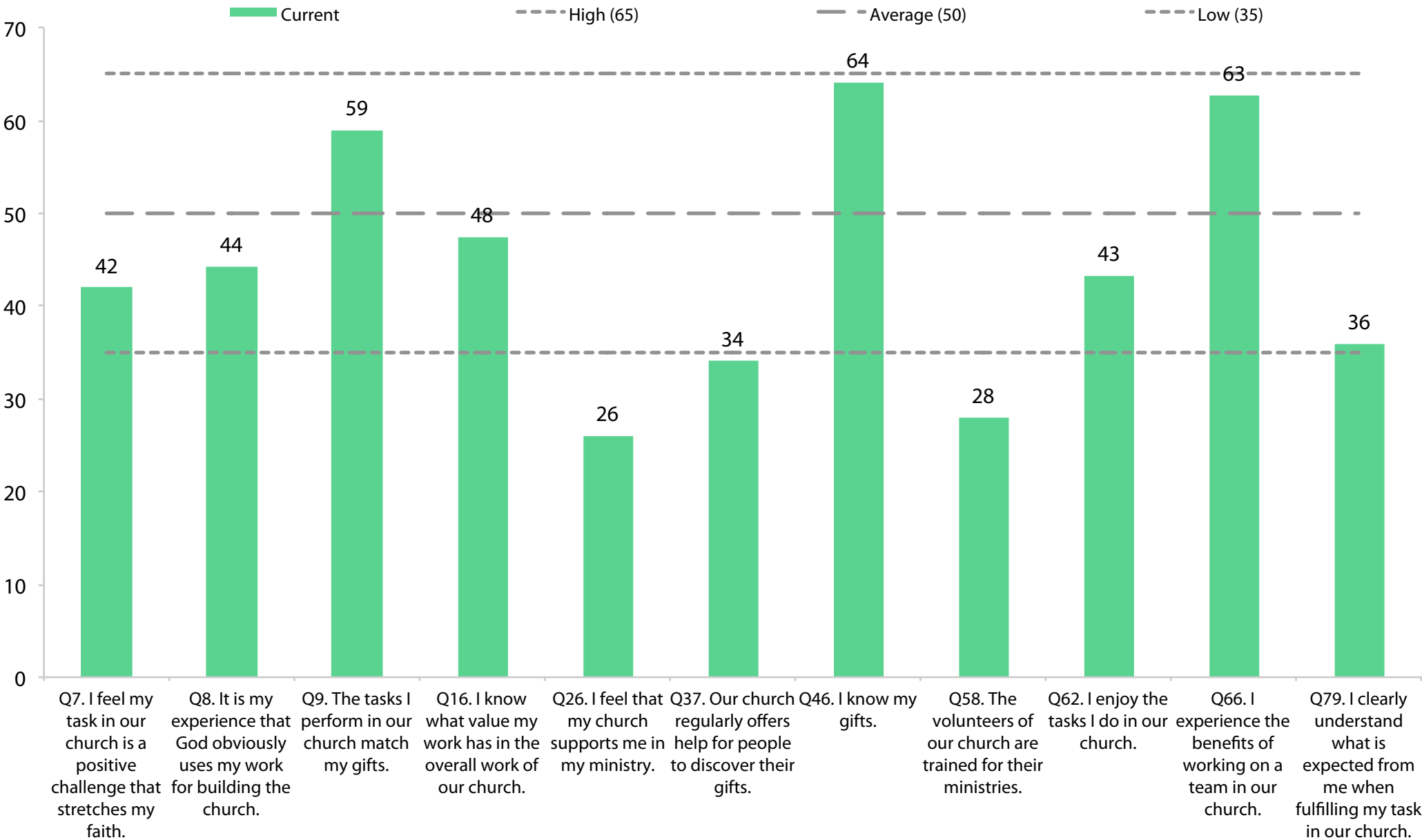


EL Dynamic progress

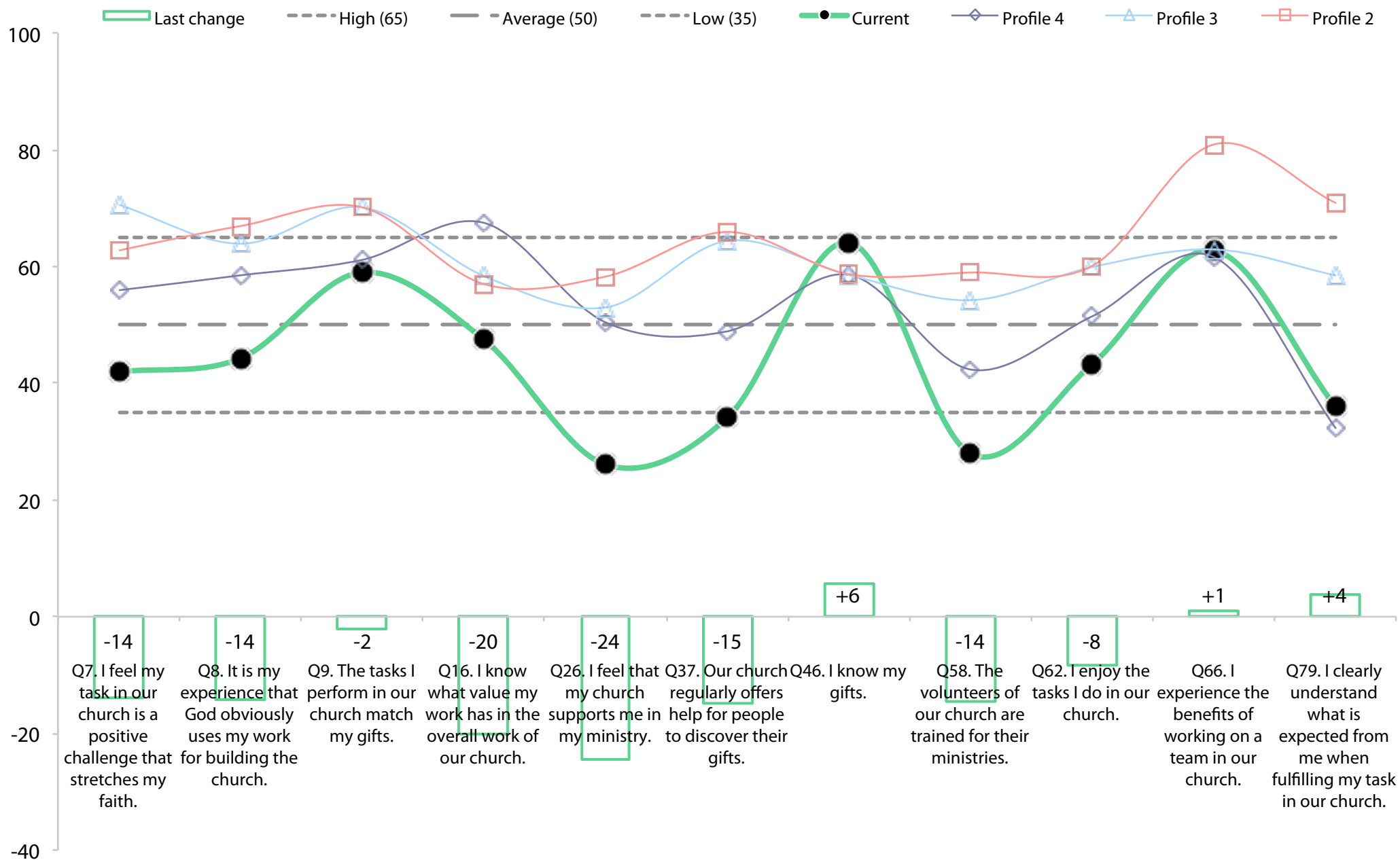




Gift-based Ministry Current Profile

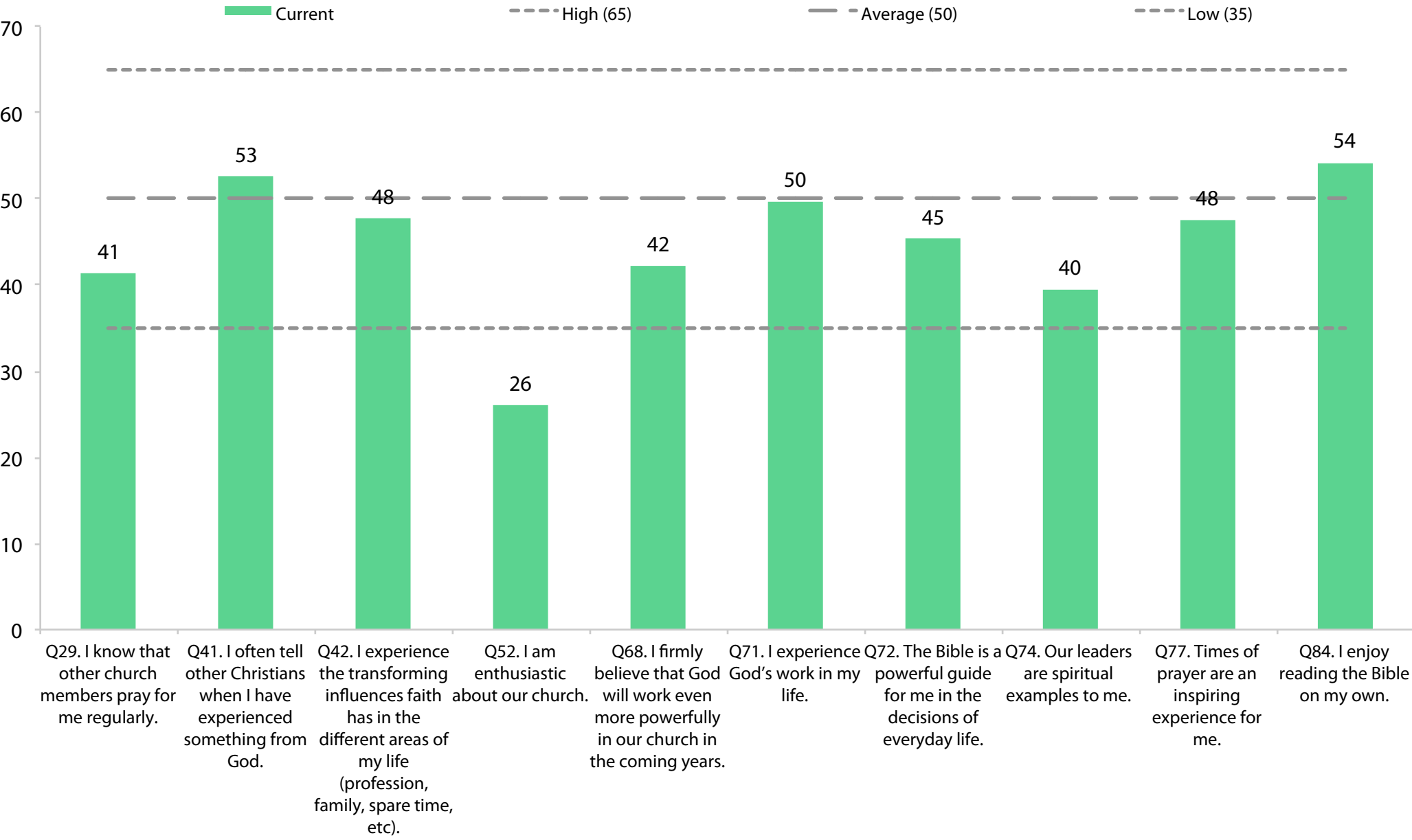


GbM Dynamic progress

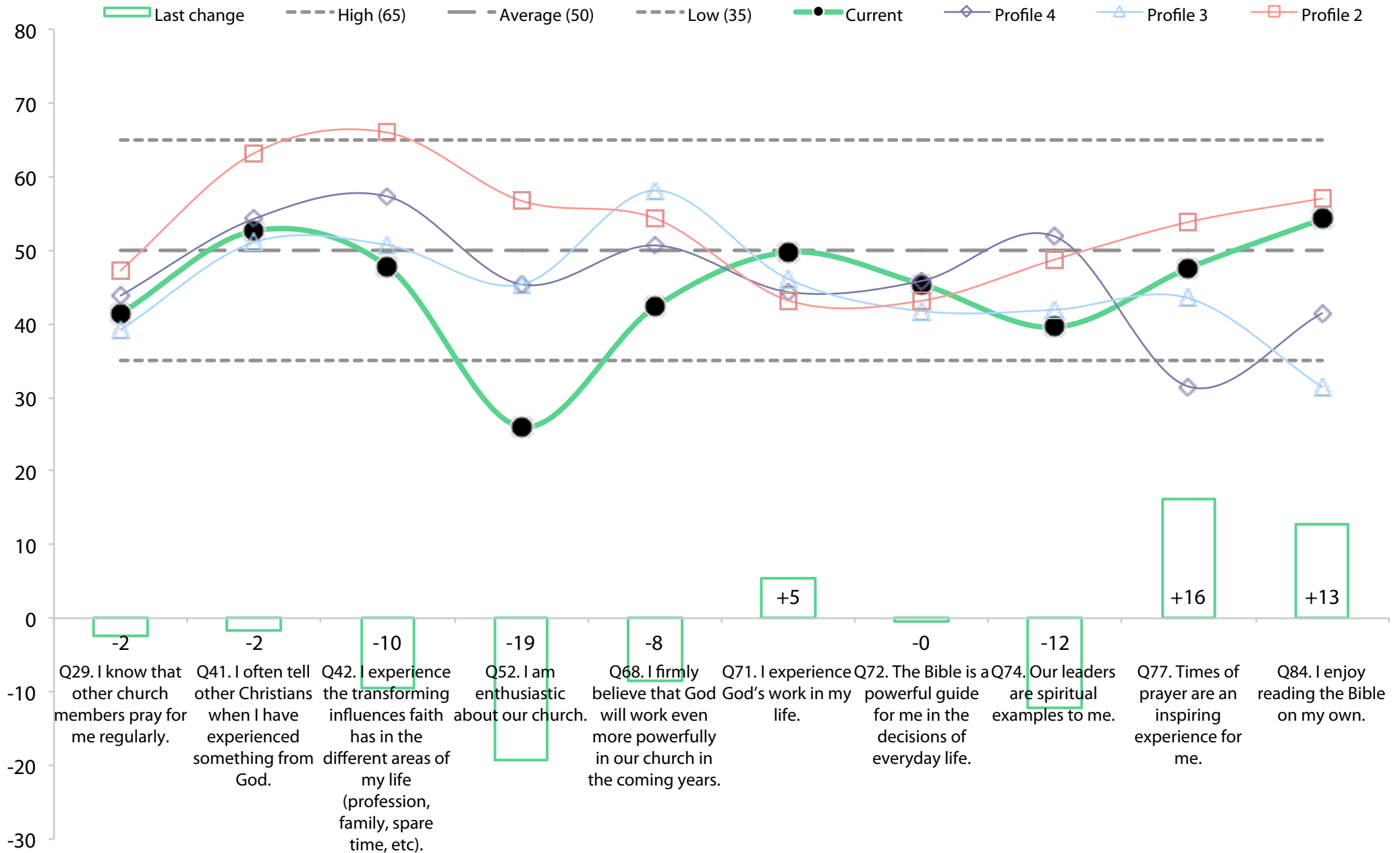




Passionate Spirituality Current Profile

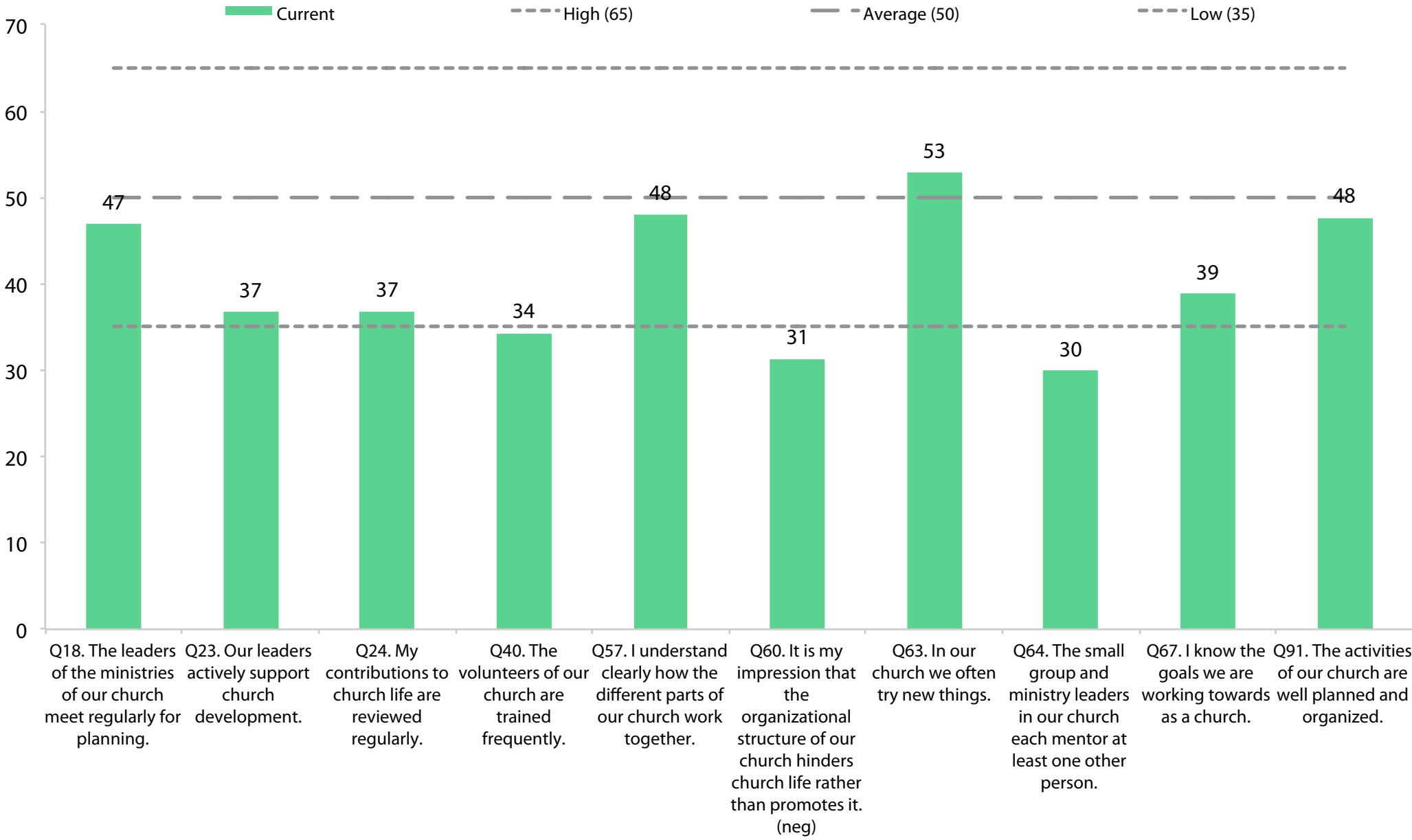


PS Dynamic progress

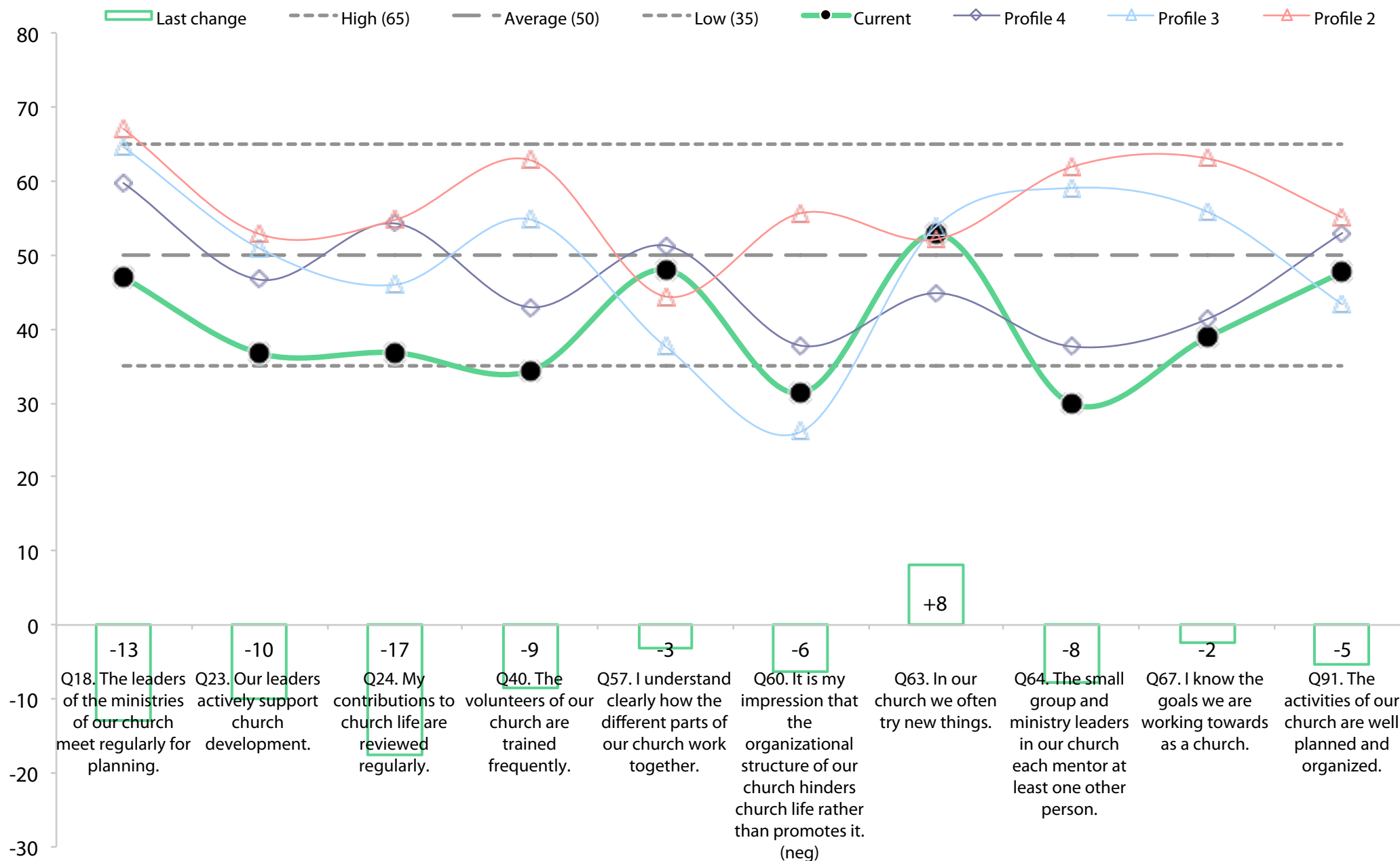




Effective Structures Current Profile

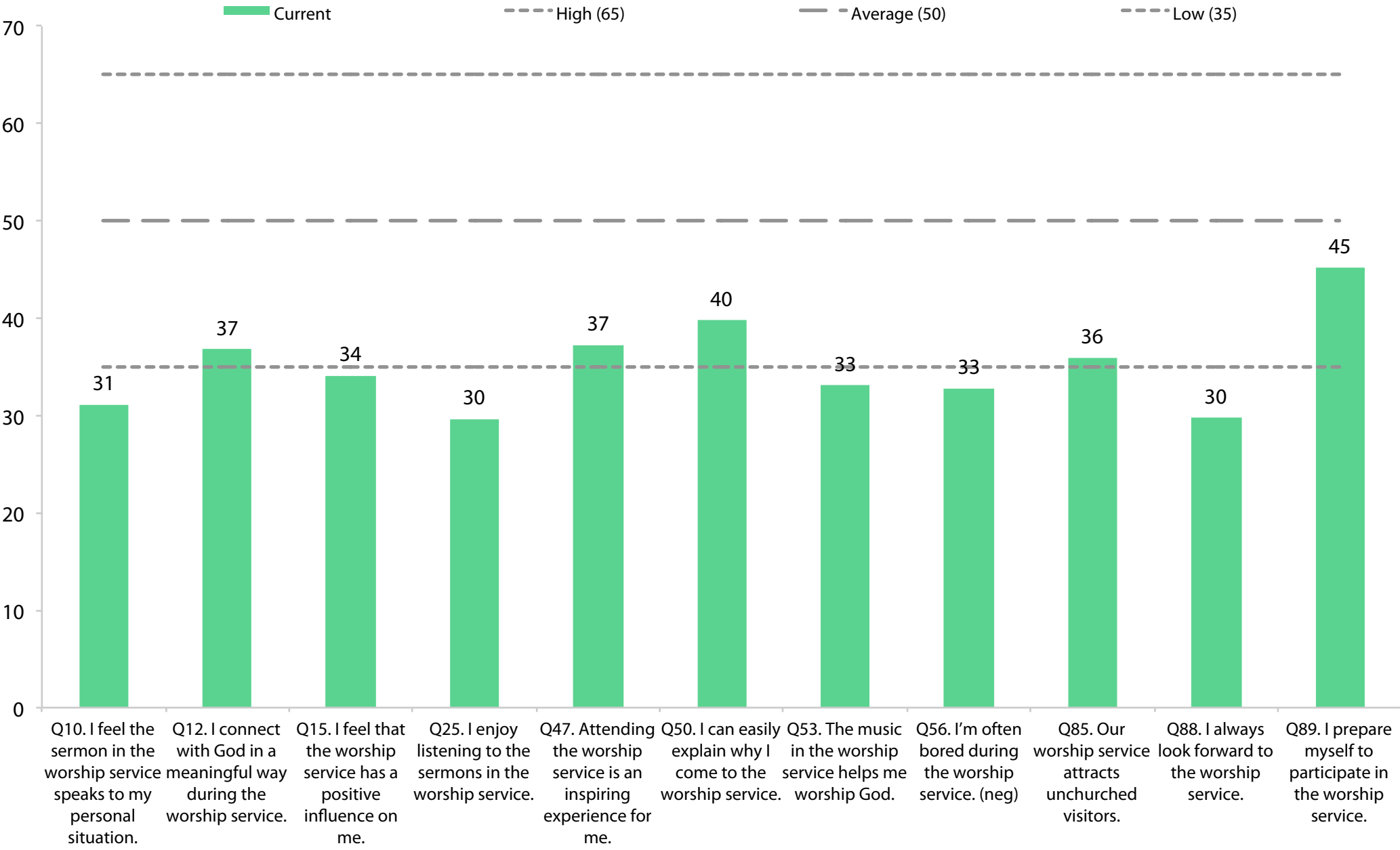


ES Dynamic progress

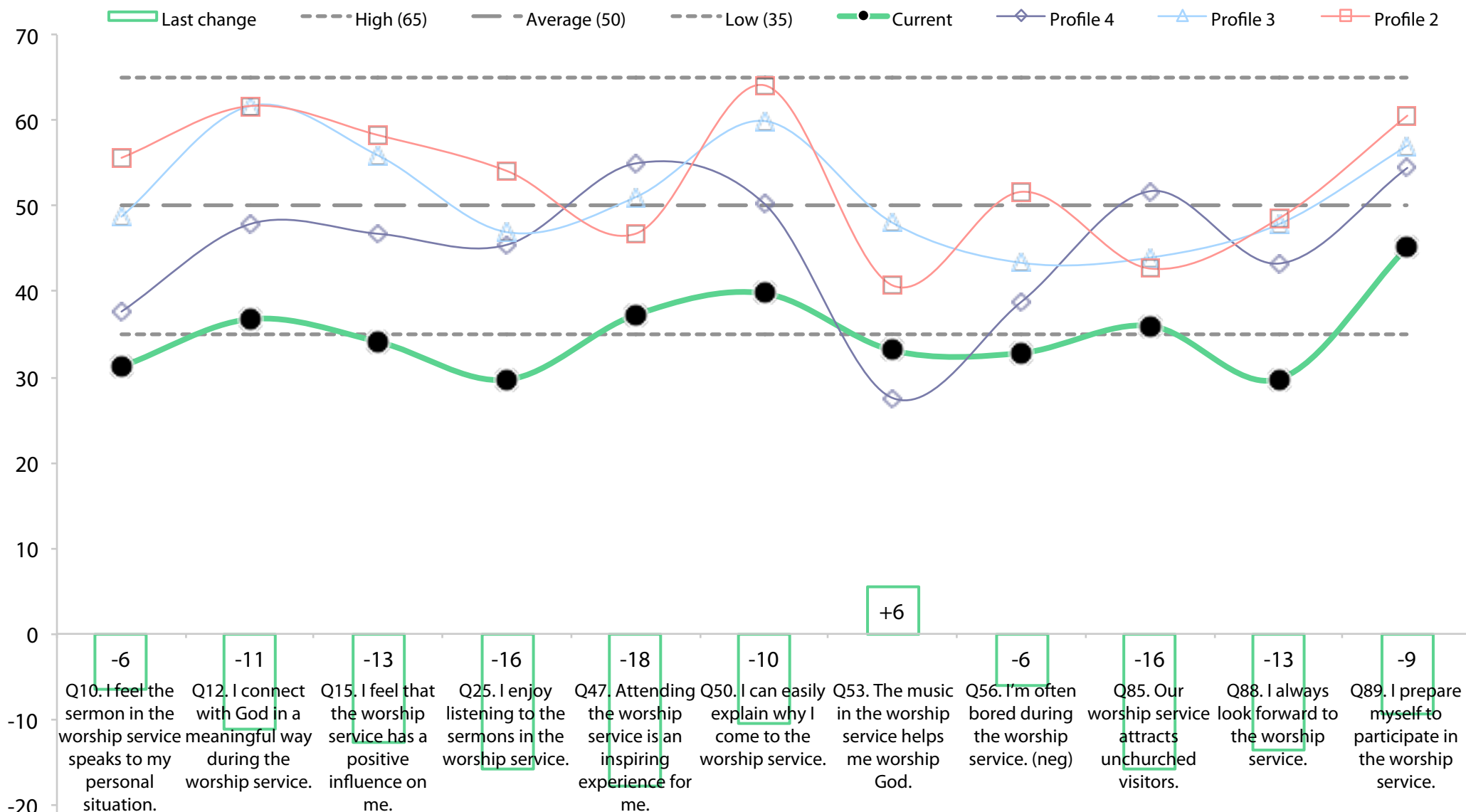




Inspiring Worship Service Current Profile

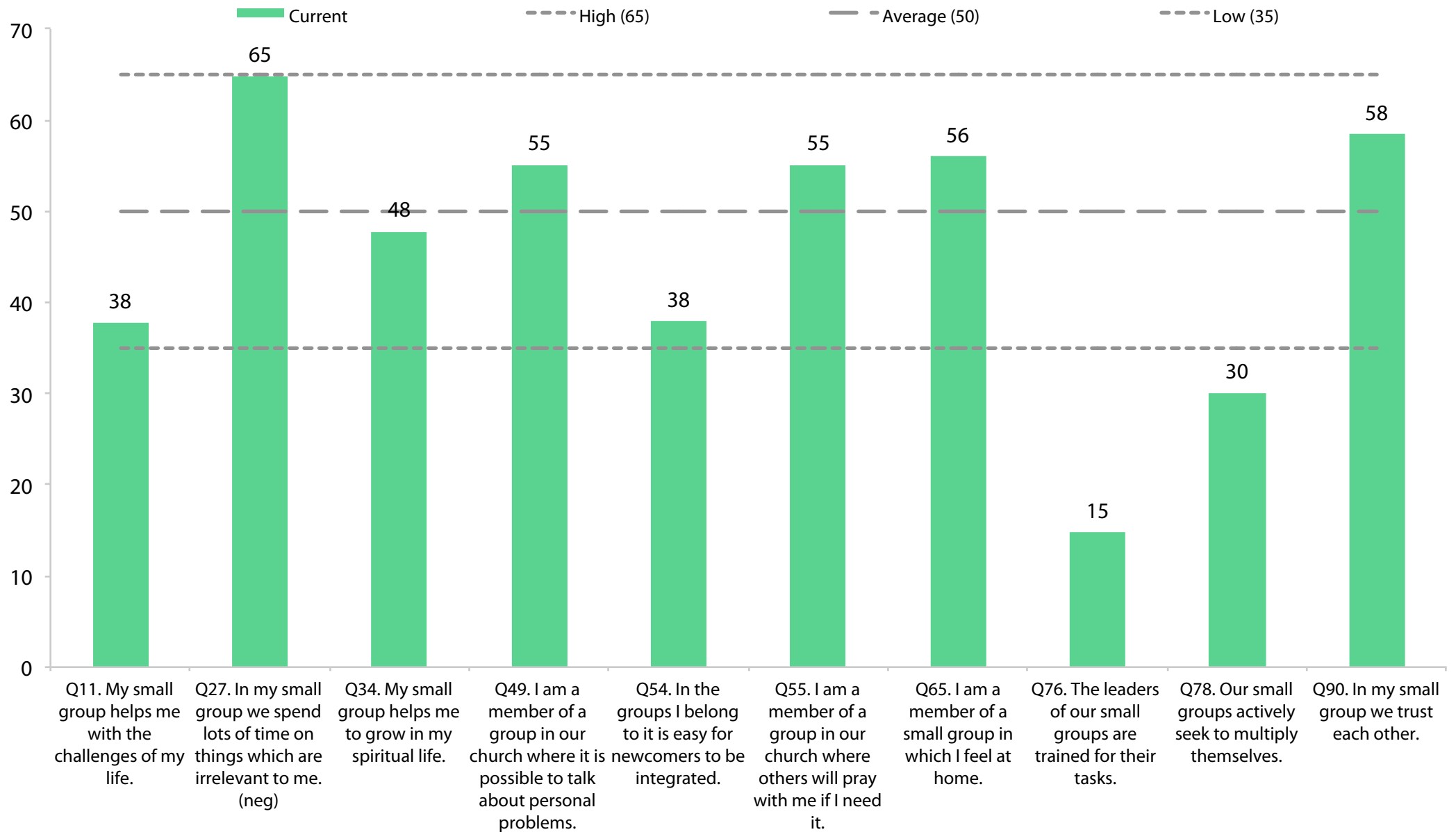


IWS Dynamic progress

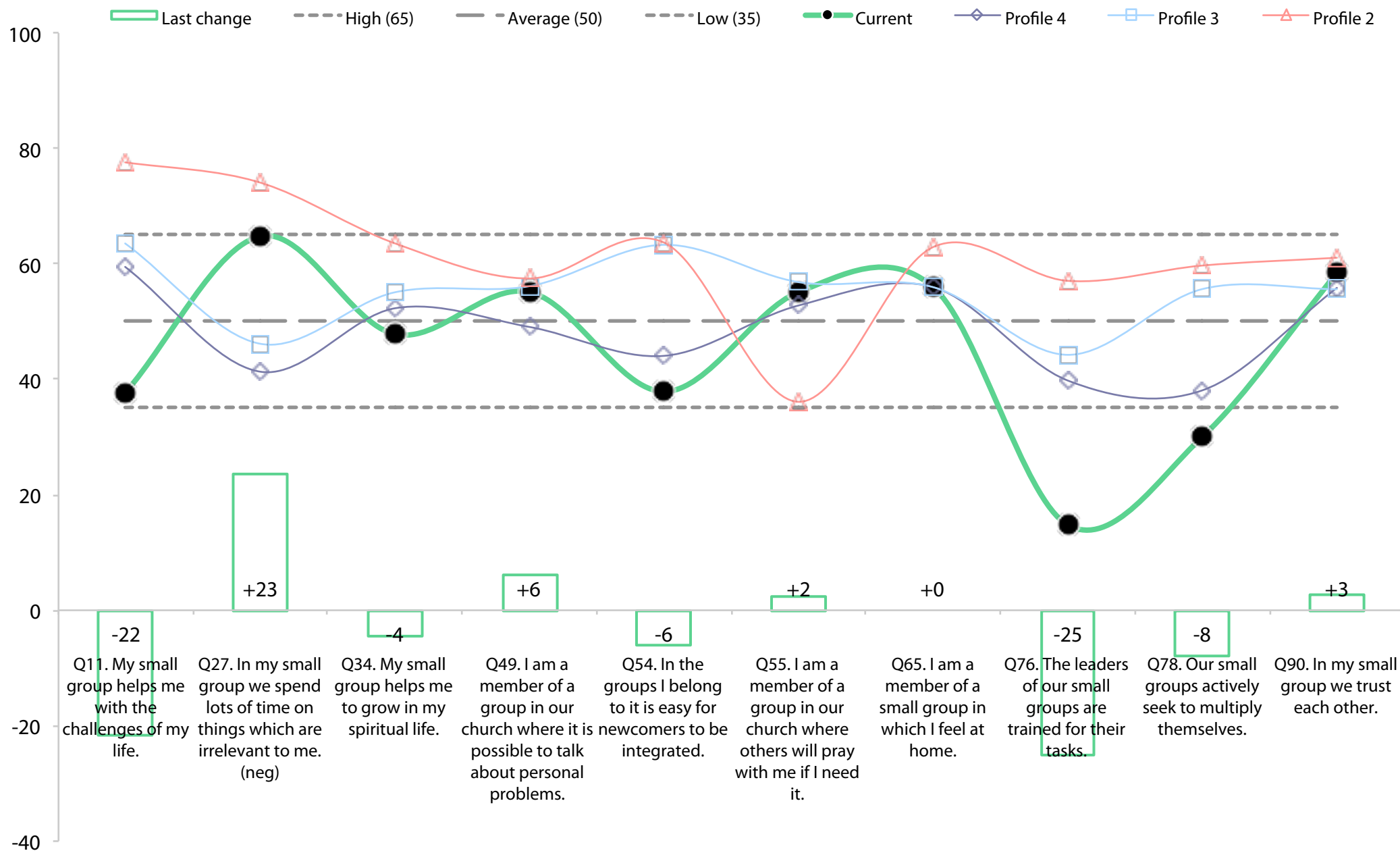




Holistic Small Groups Current Profile



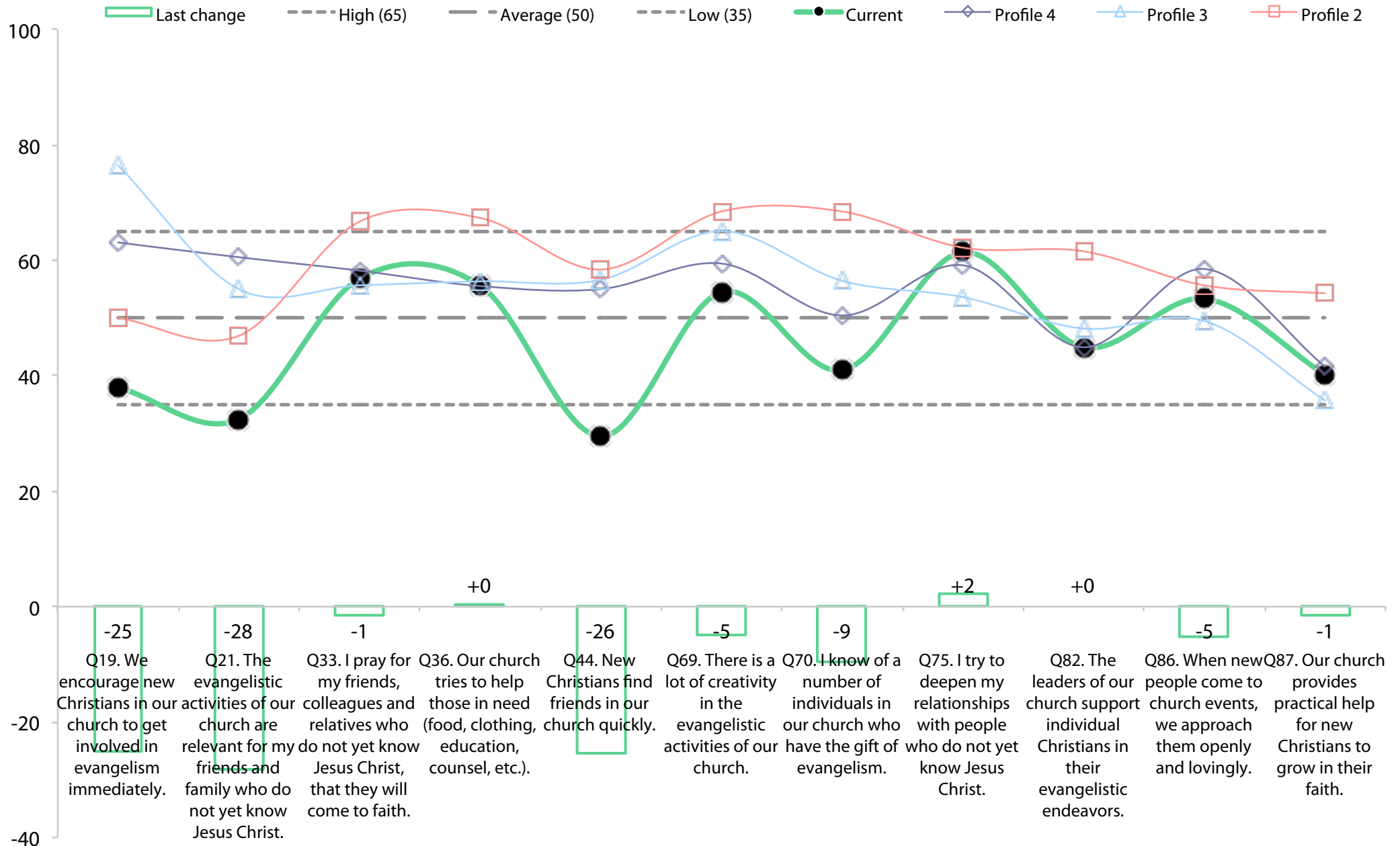
HSG Dynamic progress



Need-oriented Evangelism Current Profile

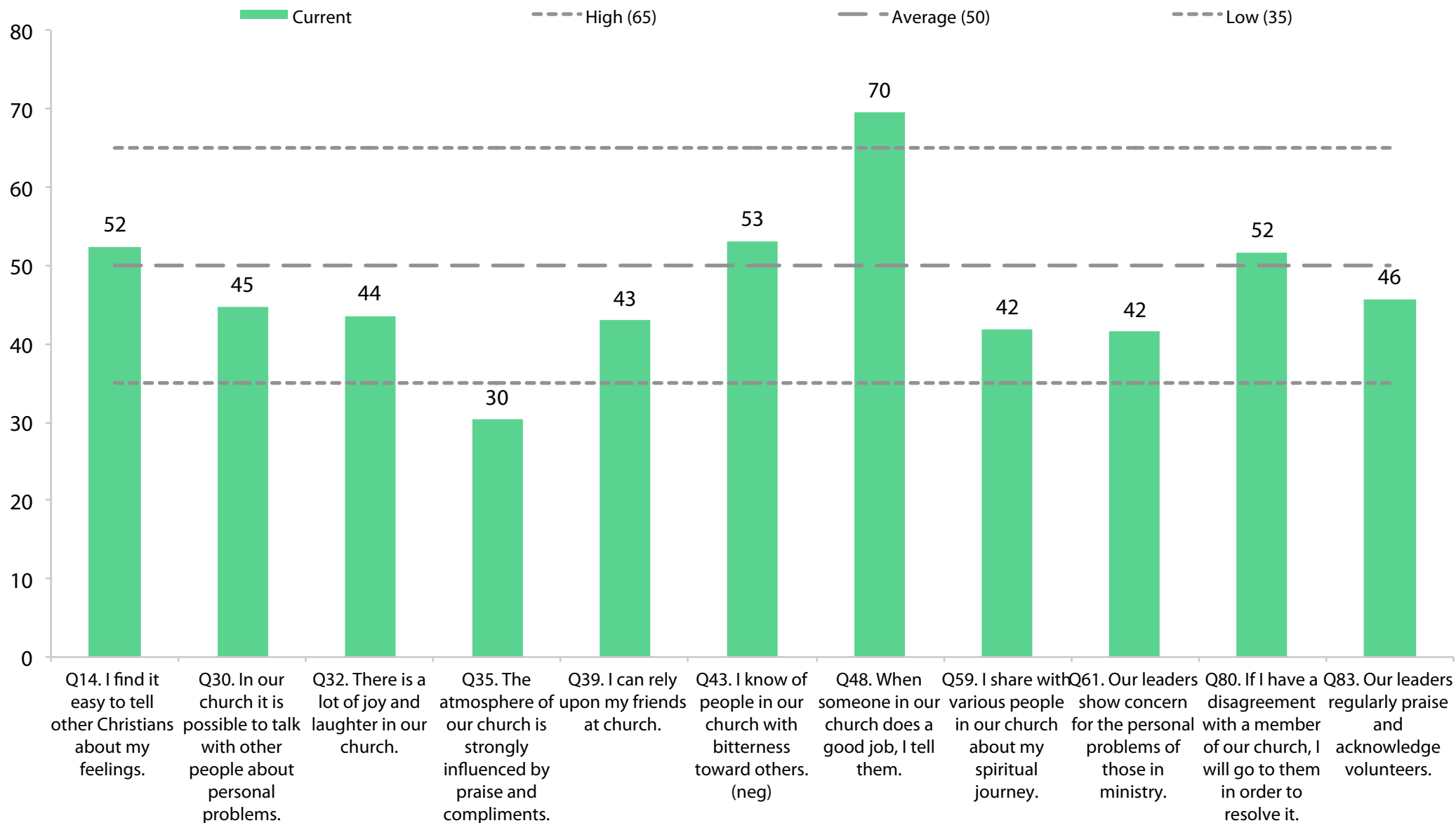


NoE Dynamic progress

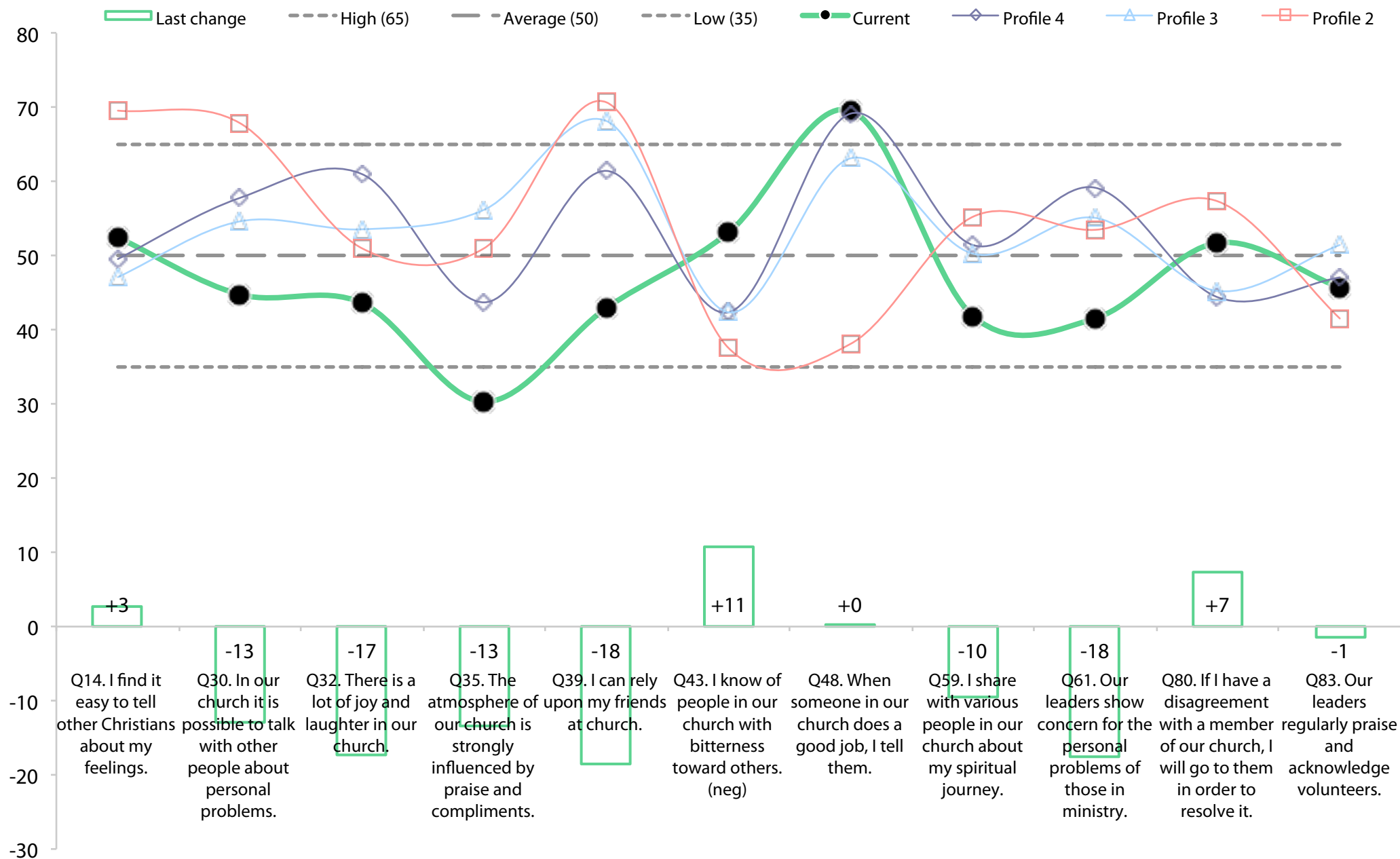




Loving Relationships Current Profile

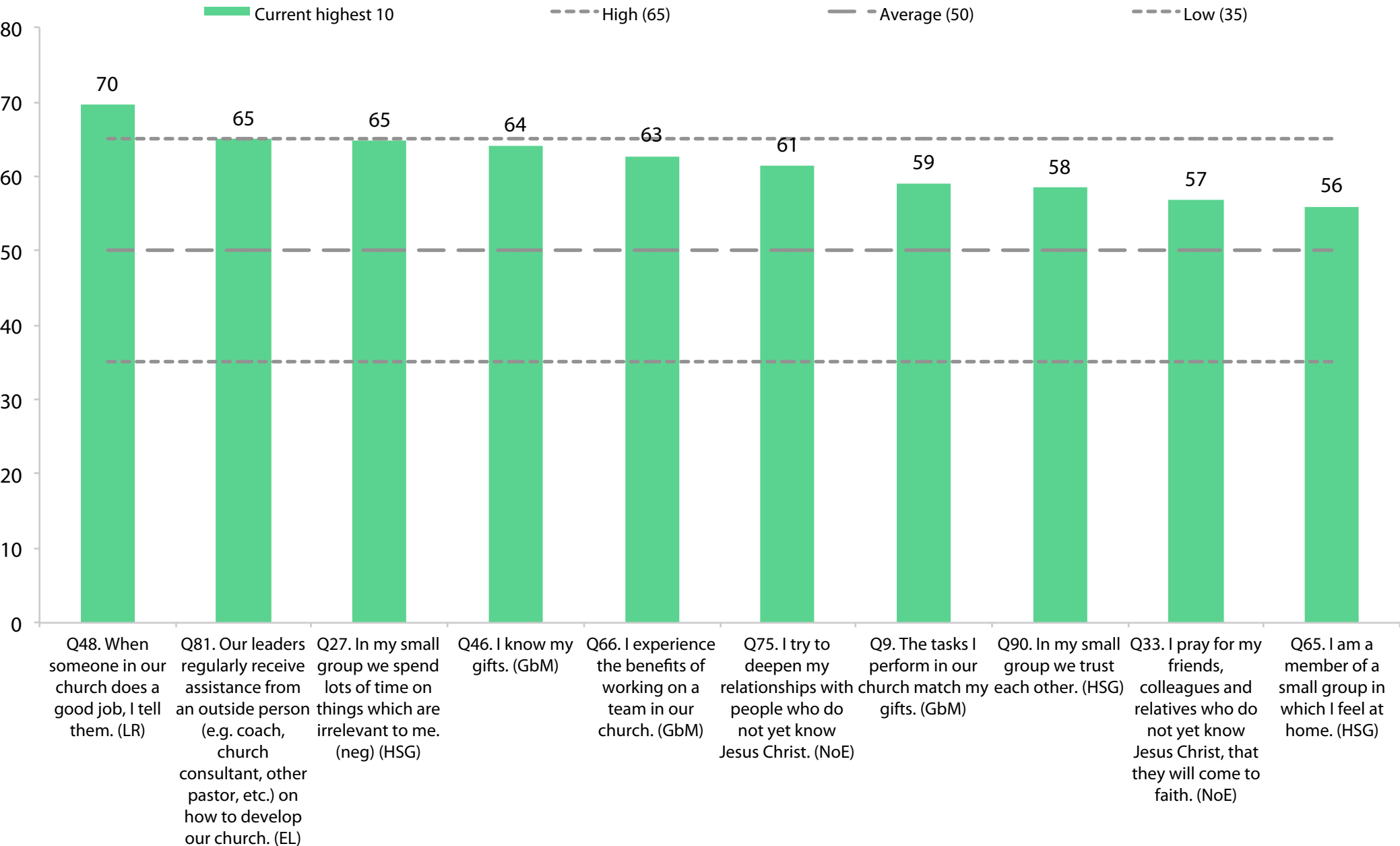


LR Dynamic progress

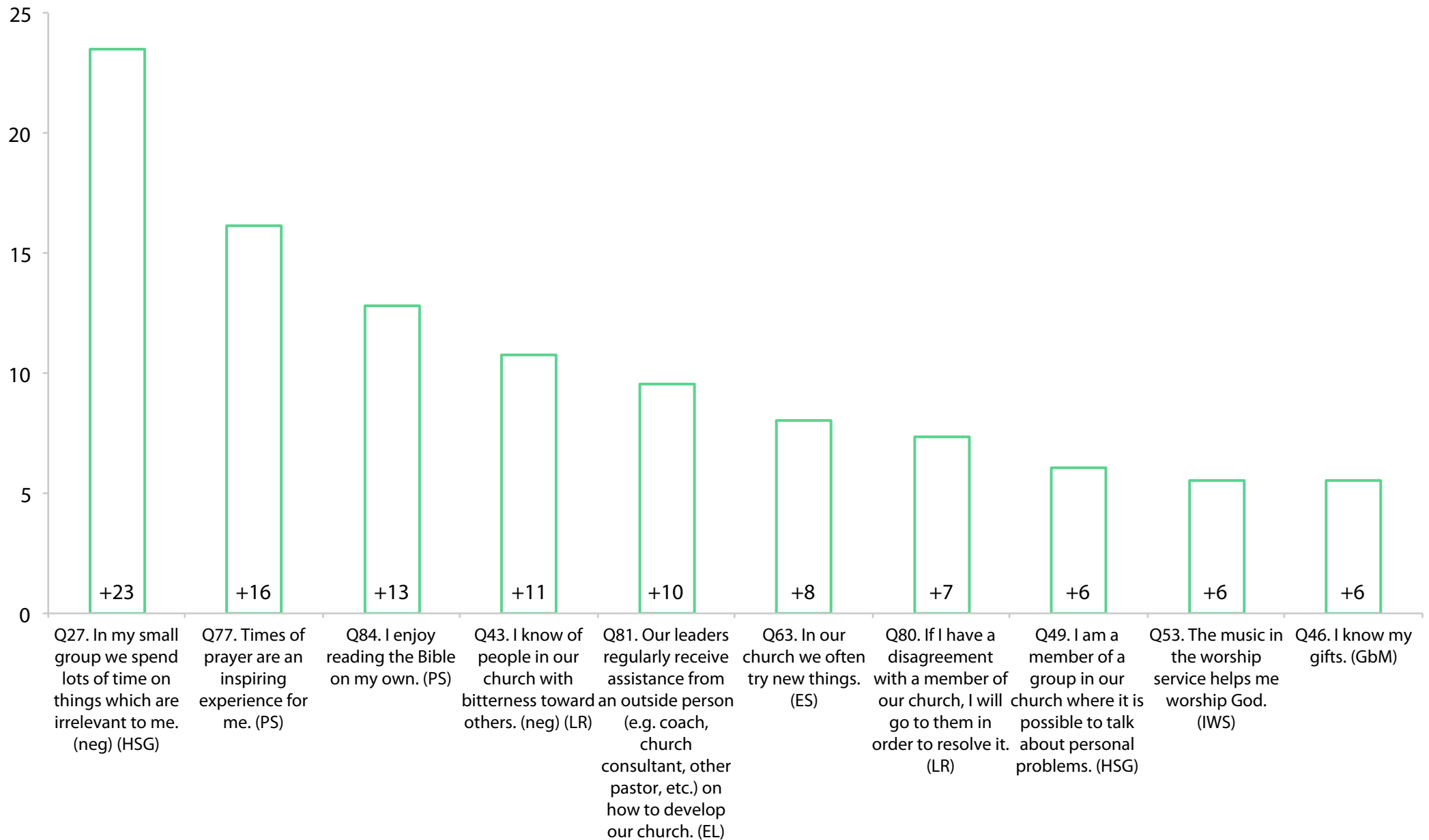




Current highest 10

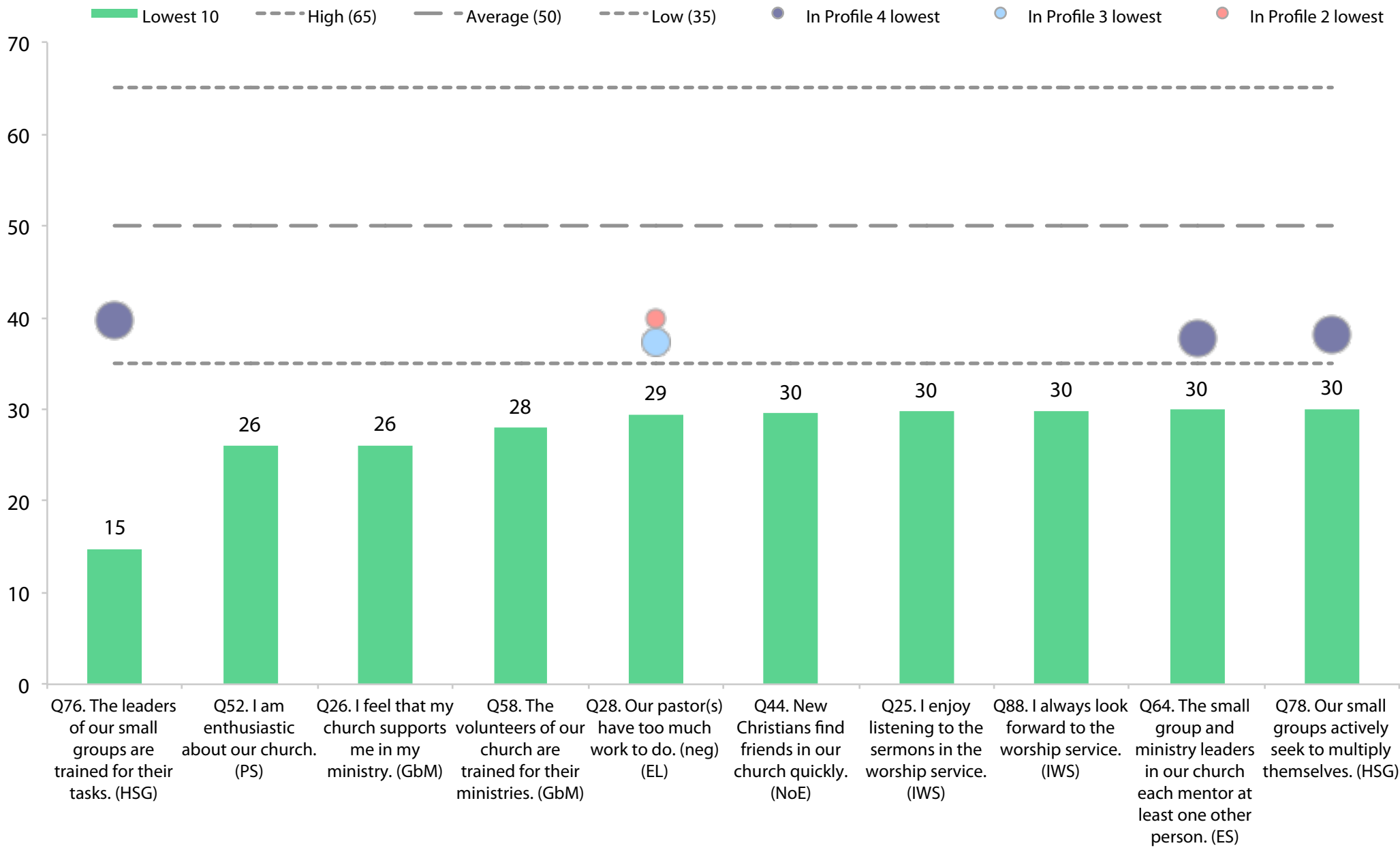


Highest 10 changes from previous to current



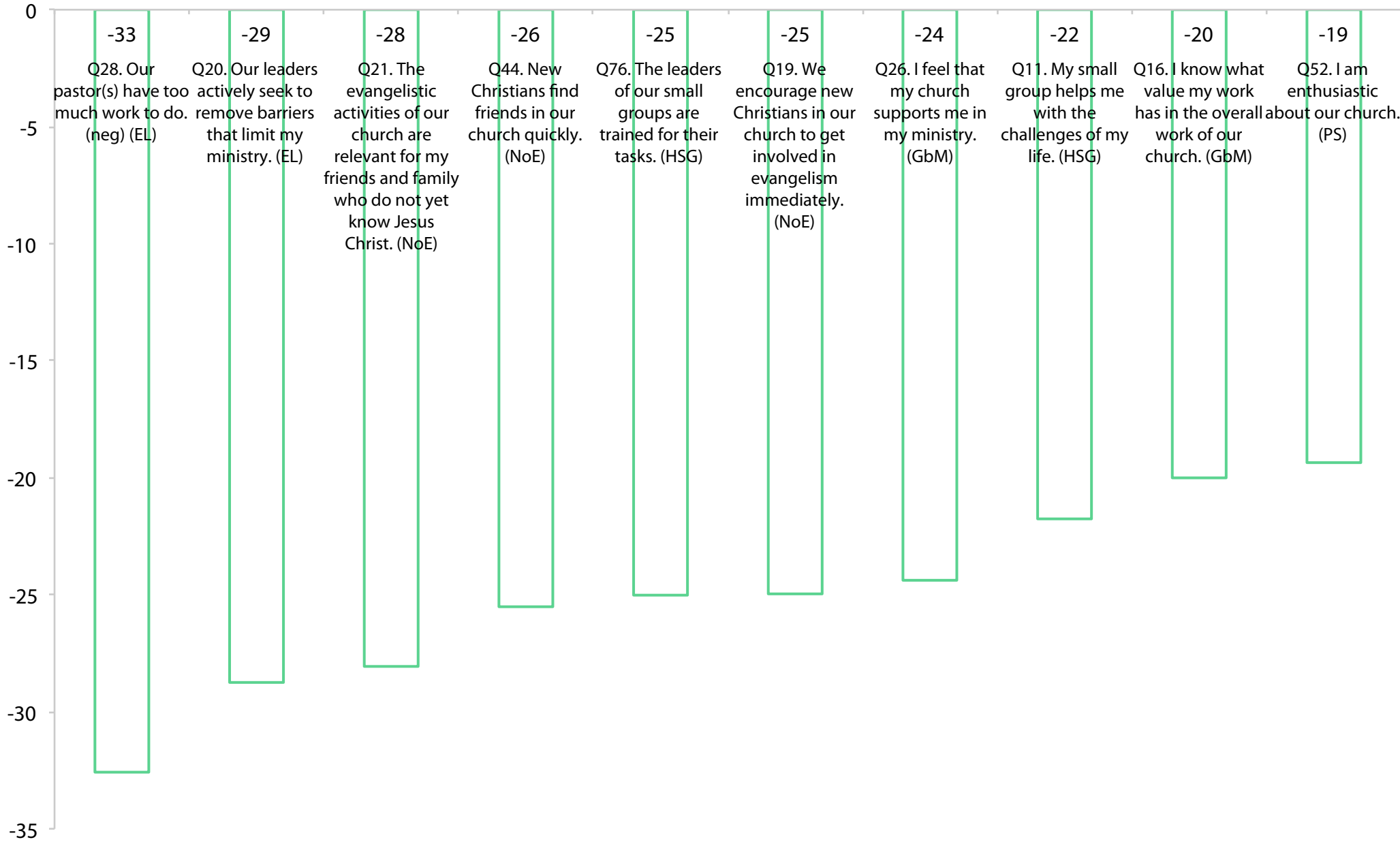


Current lowest 10



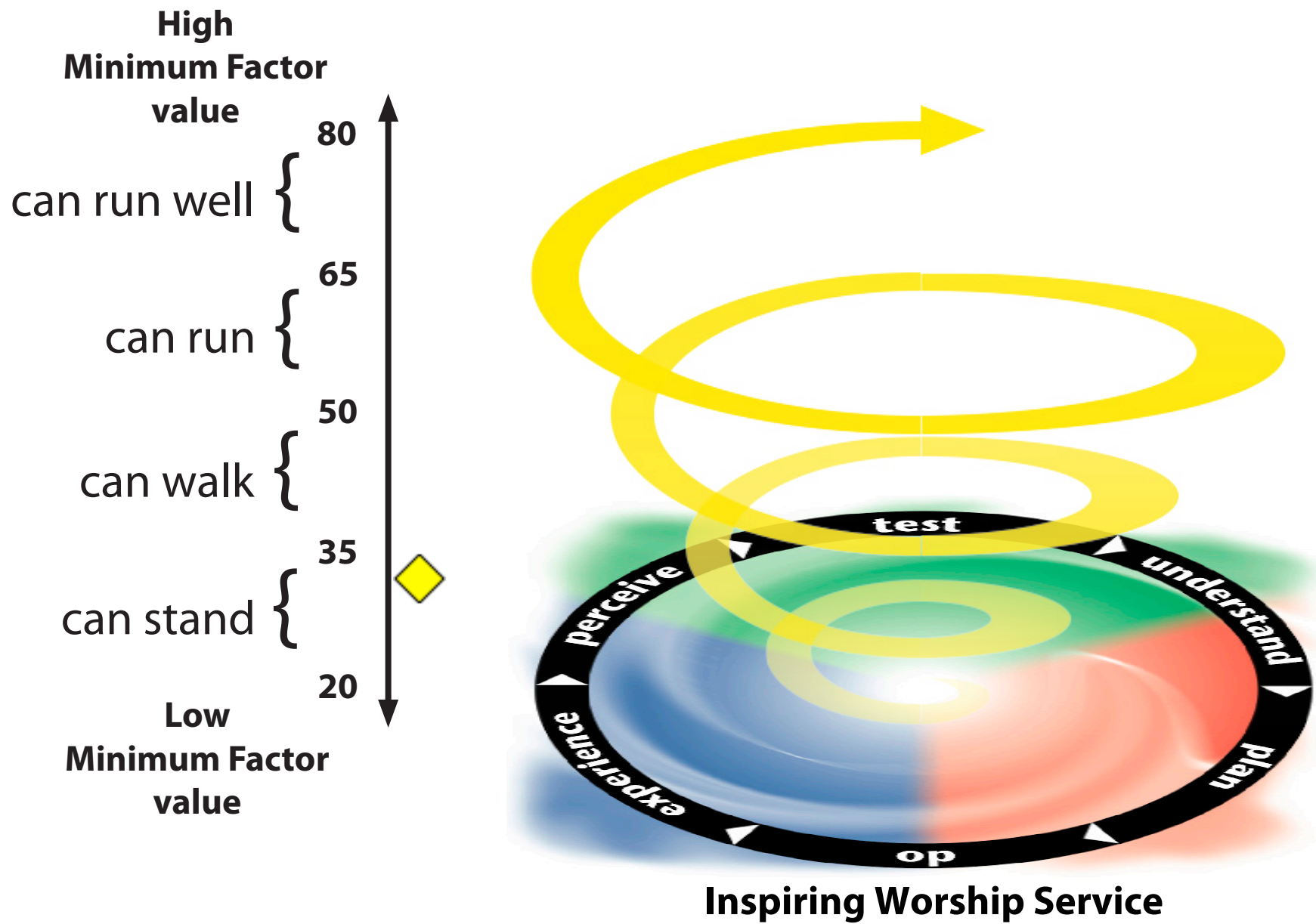


Lowest 10 changes from previous to current

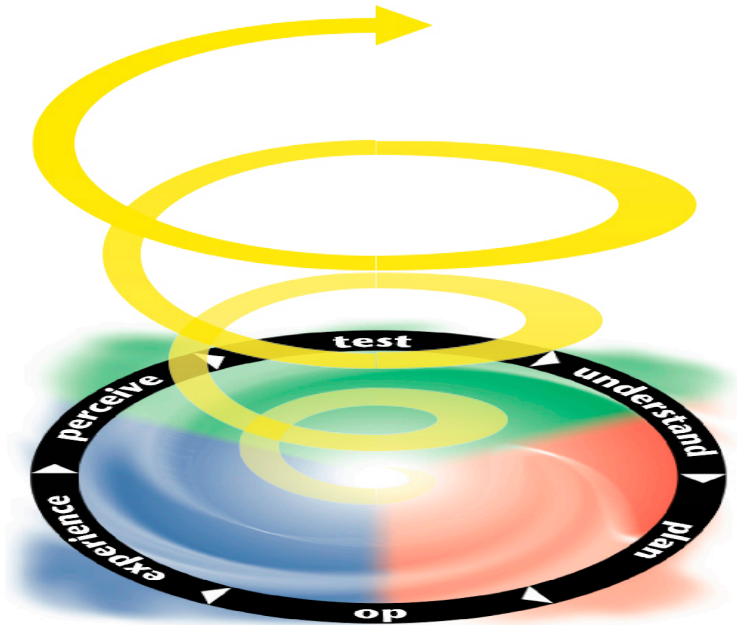




Current Capacity



My Cycle Starter Plan



Our current challenges

Service

Inspiring Worship Service

learning

inspiration

relevance



"Opening the front door" & "Breathing in"

**Beyond reasonable doubt,
which of the above do you personally
need to explore further
for the sake of your church?**

www.ncdchurchsurvey.org/cycle-starters